

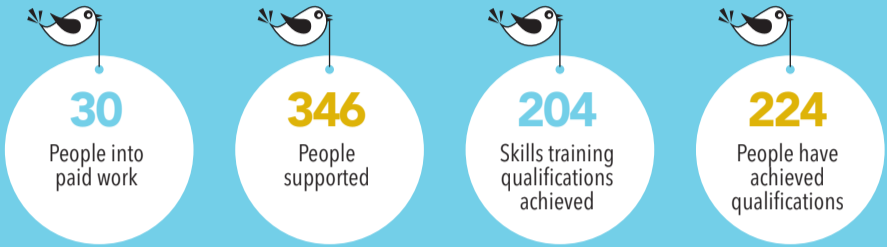
MON

MON

For every £1 invested into NOW Group we generated



Our services have saved **£597,950** in daycare places



We're a social enterprise supporting people with learning difficulties and autism into jobs with a future.



This project is part funded through the Northern Ireland European Social Fund Programme 2014 – 2020, the Department for the Economy and the Department for Communities.



Tel: 028 9043 6400
Twitter: @NOW_Group
Facebook: nowgrouporg
www.nowgroup.org

Measured by www.gaugeni.co.uk

Our volunteers are out of this world!

Family Service
Family Service aims to support families in which parents have mild to moderate learning difficulties or have an Autistic Spectrum Condition. By March 2016, 5 clients had been recruited onto the service.

Fandom
There was a massive interest this year in the launch of Fandom, a new social forum for young adults who are socially isolated and have a high functioning form of autism or Asperger's. Fandom reached its membership capacity of 20.

Financial Capability
NOW Group is the delivery partner for Money for Life, 3 UK wide financial capability programmes: Teach Me, Teach Others and Money Mentors.

Our Boards time and commitment is valued, it's like gold dust.

Parent
"I used to lie in bed at night worrying about his future but now I feel more positive."

Employment Participant
"Nothing would have changed in my life if I wasn't with NOW. NOW has made an incredible change in my life through employment and support."

Fandom Participant
"Everybody here laughs with me, not at me."

For every £1 invested into NOW Group we generated

£8

in social value

£167,232 Amount that clients have earned in wages

WORK

346

People supported

36

Clients availed of work experience

15

People into voluntary work

30

People into paid work

22

Clients supported through the Workable NI programme

6

Clients supported through Work Connect

QUALIFICATIONS

224

People have achieved qualifications

204

Skills training qualifications achieved

19

Money Plus qualifications achieved

17

Customer service skills qualifications achieved

24

Diversity qualifications achieved

111

Employability skills qualifications achieved

26

Catering qualifications achieved

33

ICT module qualifications achieved

FACEBOOK

959

New likes on Facebook

SOCIAL ENTERPRISE

15%

Growth in social enterprise activities

30%

Gross margin up on Loaf Catering

50%

Employment headcount increased

TWITTER

3210

New Twitter followers

TRANSITION SERVICE

41

School aged people supported by our Belfast Transition Service

18

Young people supported by our Transition II service

21

Students introduced to the N'Abbey Transition Service

PARENTS

55%

Reduction in levels of stress reported by our clients parents

OUR VOLUNTEERS

51

NOW Group volunteers

= 4,147

Volunteer Hours in total

= £29k

In social value to the community

www.nowgroup.org

Measured by www.gaugeni.co.uk

